

VACUUM SWITCH EXPLOSION PROOF TYPE

PS1000X

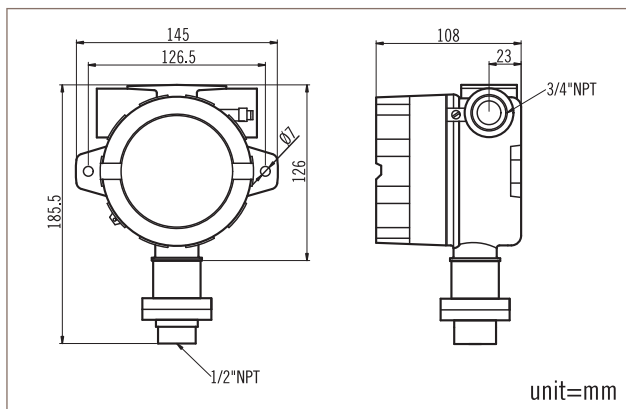
**CLASS I, GROUPS A, B, C, D;
CLASS II, GROUPS E, F, G; NEMA 4X**
Proof Pressure to 1000 psi
Adjustable Range: -25 ~ -760 mmHg
Temperature: -5°C ~ +150°C

The New-flow PS1000X, an explosion proof vacuum switch, is designed to be used in control systems. PS1000X has high set point repeatability and narrow dead band features. Easily adjusted to the set point, no special tools needed!

Technical data

- Switch Data:** One SPDT Microswitch
15amps 125/250V, Gold Contact Microswitch 1A
125/250VAC
- Housing:** die cast aluminum alloy with paint
- Conduit Connection:** 3/4" or 1/2" NPT Female
- Pressure Element:** Diaphragm
- Process Materials:** Wetted parts-SS316; O-ring- Viton
- Process Connection:** 1/2" or 1/4" NPT Female and BSP Female available

Dimensions



Range Table

Code	Adjustable Range	Dead Band	Maximum Pressure Proof
1R	-25 ~ -760 mmHg	10 ~ 20 mmHg	1000 psi

Ordering Information

PS1000X	Code	Range		
	1R	-25 ~ -760 mmHg		
		Code	Wetted Material	
		A	SS316	
		Code	Process Connection	
			(1) 1/2" NPT Female (2) 1/4" NPT Female (3) 1/2" BSP Female (4) 1/4" BSP Female	
		Code	Condit Connection	
			(E) 3/4" NPT Female, standard (F) 1/2" NPT Female	
		Code	Switch Form	
		1	One SPDT	
PS1000X				Complete Ordering Code